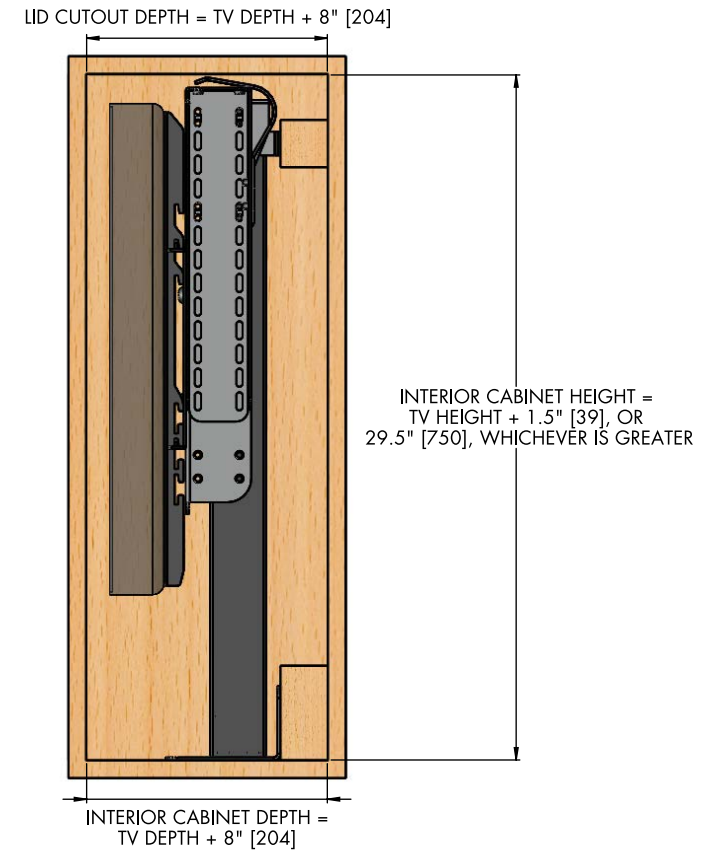
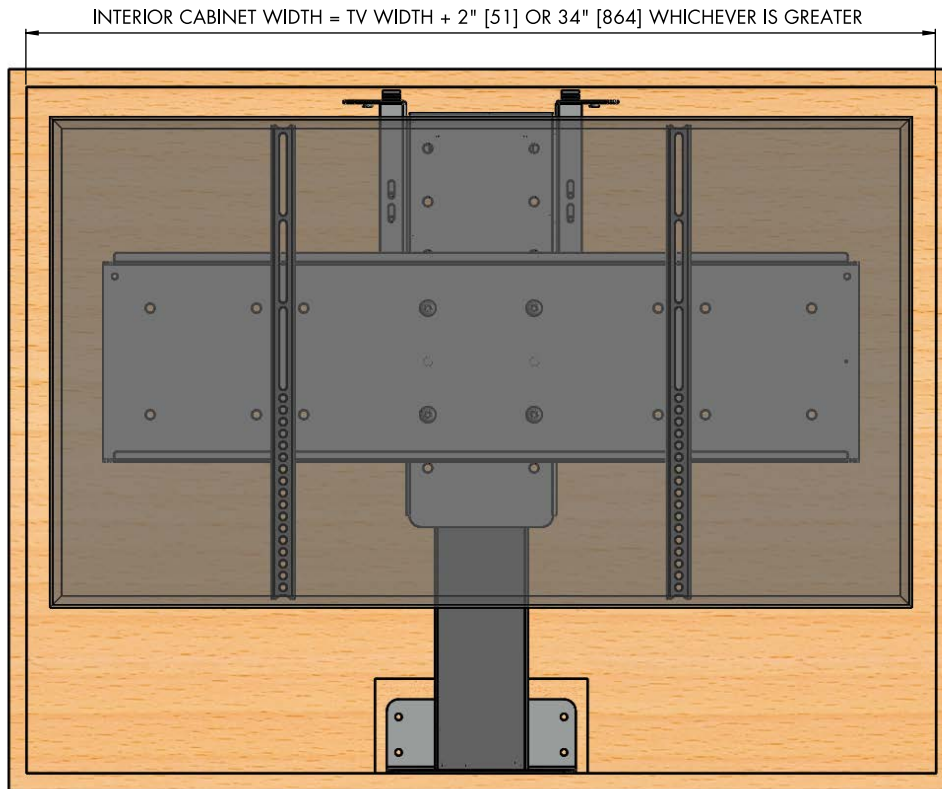


# MODEL L-50 DIAGRAM WITH HINGED TOP GUIDES - PRIMARY CABINET DIMENSIONS



## NOTES:

1. THE CABINET BOX SHOWN IN THE DIAGRAM IS FOR REFERENCE ONLY AND IS NOT PROVIDED WITH THE LIFT SYSTEM
2. FOR REFERENCE DIMENSIONS, SEE PAGE 2 OF THIS DIAGRAM
3. ALL DIMENSIONS SHOWN IN INCHES WITH MILLIMETERS SHOWN IN [ ]
4. FOR THIS LIFT MODEL, THE LENGTH OF ITS TRAVEL [EXTENSION LENGTH OR STROKE] IS 39.25" [998]
5. TO FULLY EXPOSE THE TV, TV HEIGHT + LID THICKNESS + 0.75" [20] CANNOT EXCEED 39.25" [998]
6. FOR THIS LIFT MODEL, THE TOTAL WEIGHT CAPACITY IS 100 LBS [45 KG] (TV AND LID)
7. HEIGHT OF THIS MODEL IS ADJUSTABLE IN 1/4" [7] INCREMENTS UP TO 12" [305] MINIMUM HEIGHT = 29" [737]; MAXIMUM HEIGHT = 41" [1042]
8. WHEN DETERMINING TV HEIGHT, ALWAYS USE MANUFACTURER SUPPLIED "TV WITHOUT STAND" HEIGHT
9. LIFT MECHANISM IS POWDERCOATED BLACK STEEL, COLORS IN DIAGRAM ARE FOR CLARITY ONLY

## IMPORTANT HINGED LID INFORMATION

1. HINGED LIDS REQUIRE THE USE OF THE "HINGED TOP GUIDE" ACCESSORY
2. HINGES FOR THE LID ARE NOT PROVIDED BY NEXUS 21
3. SEE PAGE 2 OF THIS DRAWING FOR MORE DETAILED INFORMATION ABOUT THE HINGED LID

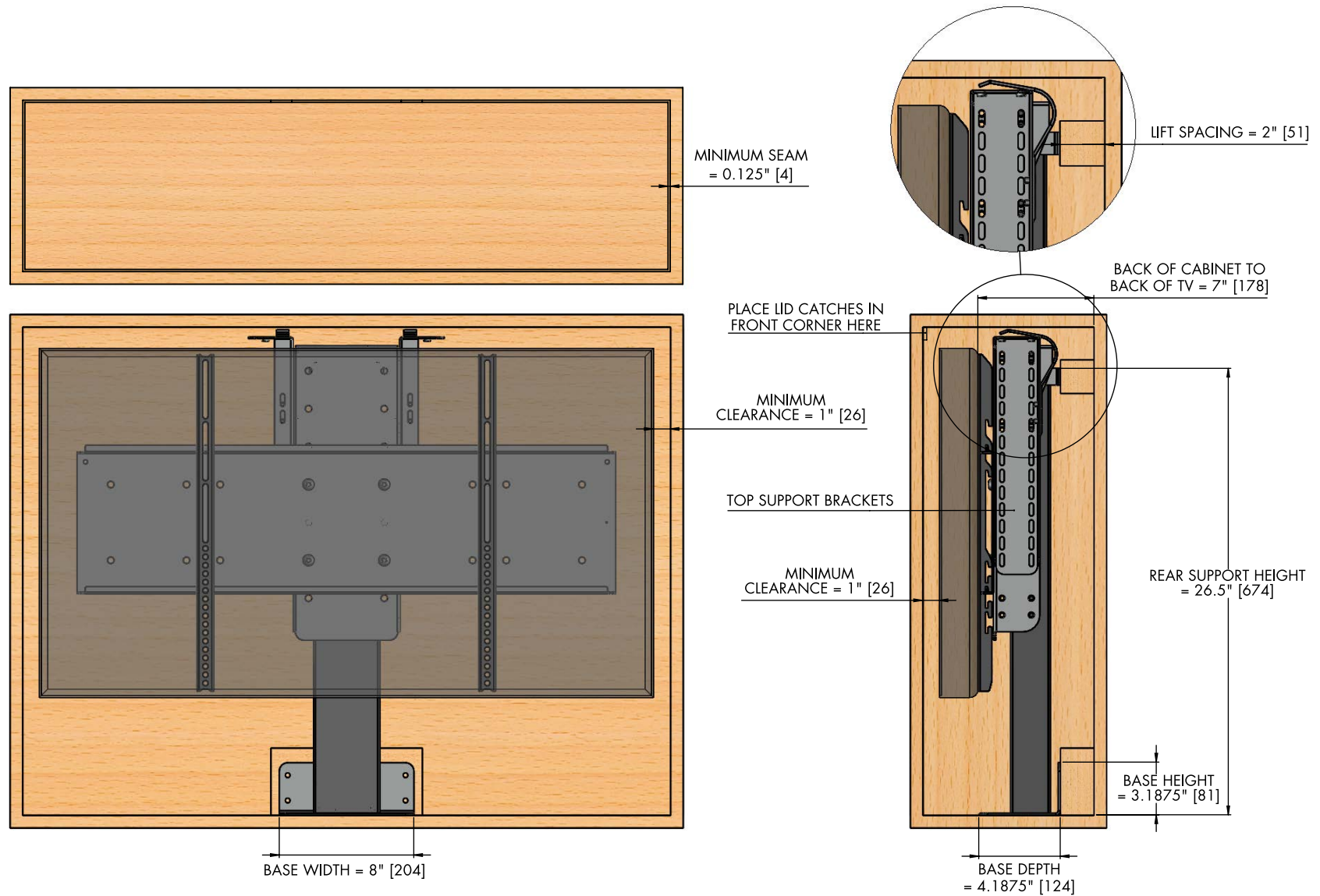
## QUICK REFERENCE DIMENSION GUIDE (USE WHICHEVER IS GREATER)

TV DIMENSIONS: W \_\_\_\_\_, H \_\_\_\_\_, D \_\_\_\_\_  
 INTERIOR CABINET HEIGHT:  $H + 1.5"$  [39] = \_\_\_\_\_ OR 29.5" [750]  
 INTERIOR CABINET WIDTH:  $W + 2"$  [51] = \_\_\_\_\_ OR 34" [864]  
 INTERIOR CABINET DEPTH:  $D + 8"$  [204] = \_\_\_\_\_  
 LID CUTOUT DEPTH =  $D + 8"$  [204] = \_\_\_\_\_

# NEXUS 21

COPYRIGHT 2017 - ALL RIGHTS RESERVED  
 UPDATED 12/04/17

# MODEL L-50 DIAGRAM WITH HINGED TOP GUIDES - CABINET REFERENCE DIMENSIONS



- NOTES:
1. TOP SUPPORT BRACKETS ALLOW TOP PLATE TO BE ADJUSTED FLUSH WITH UNDERSIDE OF LID
  2. THE LID IN THIS CONFIGURATION IS HINGED AND MUST BE SPACED AT MINIMUM 2" [51] AWAY FROM THE PIVOT POINT TO PREVENT THE LID FROM GOING OVER CENTER
  3. THE LID MUST HAVE A LID CATCH TO REST ON IN ORDER TO ENSURE IT STAYS FLUSH WITH THE SURROUNDING CABINET OR COUNTERTOP
  4. MINIMUM SEAM CAN BE REDUCED TO 0.0625" [2] WITH A 45 DEGREE BEVEL ON THE LID

## NEXUS<sub>21</sub>

COPYRIGHT 2017 - ALL RIGHTS RESERVED  
UPDATED 12/04/17